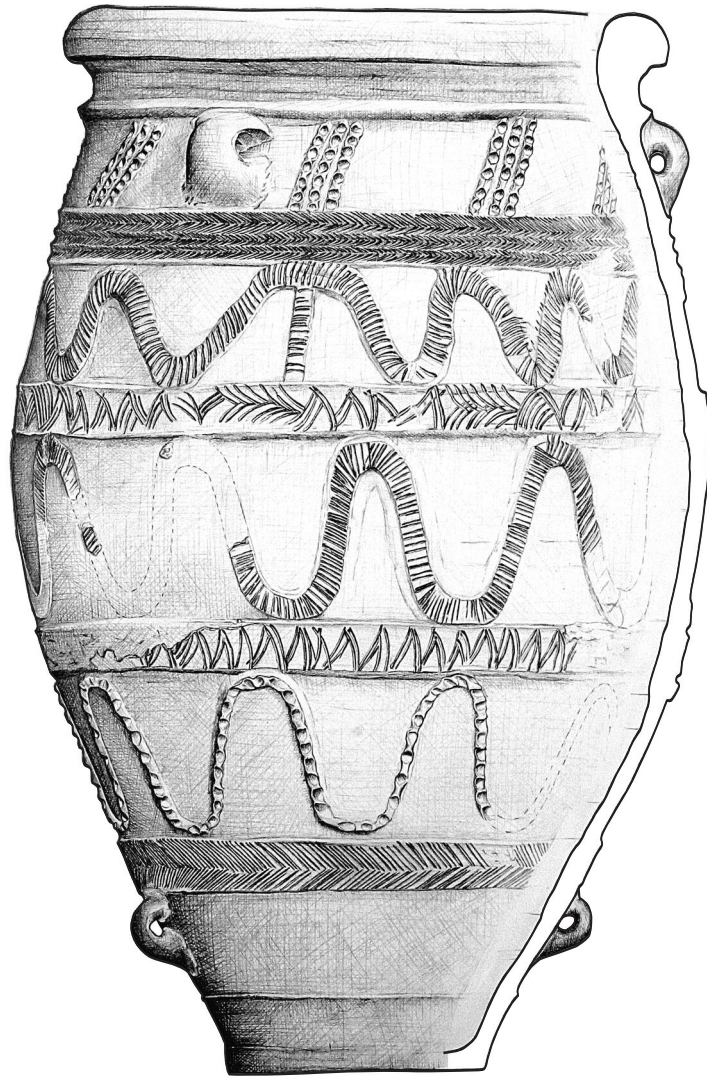




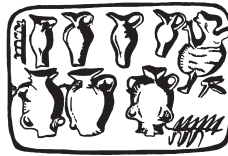
CRETAN BRONZE AGE PITHOI

Traditions and Trends in the Production
and Consumption of Storage Containers
in Bronze Age Crete



Frontispiece. Pithos from Magazine VI in the West Magazine Complex at the palace of Knossos. Drawn by Nikoletta Ntolia.

PREHISTORY MONOGRAPHS 18



CRETAN BRONZE AGE PITHOI

Traditions and Trends in the Production
and Consumption of Storage Containers
in Bronze Age Crete

by

Kostandinos S. Christakis



Published by
INSTAP Academic Press
Philadelphia, Pennsylvania
2005

Design and Production

INSTAP Academic Press

Printing

CRWGraphics, Pennsauken, New Jersey

Binding

Hoster Bindery, Inc., Ivyland, Pennsylvania

Library of Congress Cataloging-in-Publication Data

Christakis, Kostandinos S., 1966-

Cretan Bronze Age Pithoi : traditions and trends in the production
and consumption of storage containers in Bronze Age Crete /
by Kostandinos S. Christakis.

p. cm. — (Prehistory monographs ; 18)

Includes bibliographical references and index.

ISBN 1-931534-15-2 (hardcover : alk. paper)

1. Crete (Greece)—Antiquities. 2. Pottery, Minoan—Greece—Crete.
3. Storage jars—Greece—Crete. I. Title. II. Series.

DF221.C8C47 2005

738.3'82093918—dc22

2005030292

Copyright © 2005

INSTAP Academic Press

Philadelphia, Pennsylvania

All rights reserved

Printed in the United States of America

Peter Warren χάρην



Table of Contents

LIST OF TABLE AND FIGURES	ix
LIST OF PLATES	xi
ACKNOWLEDGMENTS	xiii
ABBREVIATIONS	xv
INTRODUCTION	1
CHAPTER 1. A Formal Typology For Pithoi	5
CHAPTER 2. Decorative Patterns and Style	23
CHAPTER 3. The Use of Pithoi	45
CHAPTER 4. Traditions and Trends in the Production and Consumption of Pithoi	71
BIBLIOGRAPHY	87
INDEX	101
TABLE	
FIGURES	
PLATES	



List of Table and Figures

Table 1. Functional performance characteristics and use of Cretan Bronze Age pithoi.

All figures are drawn by Nikoletta Ntolia.

1. Ovoid pithoi with wide mouth and low/without collar: Forms 1–3 (scale 1:10).
2. Ovoid pithoi with wide mouth and low/without collar: Forms 4–6 (scale 1:10).
3. Ovoid pithoi with wide mouth and low/without collar: Forms 7–9 (scale 1:10).
4. Ovoid pithoi with wide mouth and low/without collar: Forms 10–12 (scale 1:10).
5. Ovoid pithoi with wide mouth and low/without collar: Forms 13–15 (scale 1:10).
6. Ovoid pithoi with wide mouth and low/without collar: Forms 16–18 (scale 1:10).
7. Ovoid pithoi with narrow mouth and low/without collar: Forms 19–25 (scale 1:10).
8. Ovoid pithoi with narrow mouth and low/without collar: Forms 26–33 (scale 1:10).
9. Ovoid pithoi with narrow mouth and low/without collar: Forms 34–40 (scale 1:10).
10. Ovoid pithoi with narrow mouth and low/without collar: Forms 41–43 (scale 1:10).
11. Ovoid pithoi with narrow mouth and low/without collar: Forms 44–48 (scale 1:10).
12. Ovoid pithos with narrow mouth and high collar: Form 49 (scale 1:10).
13. Ovoid pithos with narrow mouth and high collar: Form 50 (scale 1:10).
14. Globular pithoi with narrow mouth and high collar: Forms 51–53; and piriform pithoi with narrow mouth and high collar: Forms 54 and 55 (scale 1:10).
15. Piriform pithoi with narrow mouth and high collar: Forms 56–62 (scale 1:10).
16. Piriform pithoi with narrow mouth and high collar: Forms 63–68 (scale 1:10).
17. Piriform pithoi with narrow mouth and high collar: Forms 69–76 (scale 1:10).
18. Piriform pithoi with narrow mouth and high collar: Forms 77–84 (scale 1:10).
19. Piriform pithoi with narrow mouth and high collar: Forms 85–88 (scale 1:10).

20. Piriform pithoi with narrow mouth and high collar: Forms 89–92 (scale 1:10).
21. Piriform pithoi with narrow mouth and high collar: Forms 93–97; and piriform pithoi with wide mouth and high collar: Forms 98–101 (scale 1:10).
22. Barrel pithoi with narrow mouth and high collar: Forms 102 and 103; barrel pithos with narrow mouth and low/without collar: Form 104; and barrel pithos with wide mouth and low/without collar: Form 105 (scale 1:10).
23. Conical pithoi: Forms 106–110 (scale 1:10).
24. Conical pithoi with vertical upper/middle sides: Forms 111–114 (scale 1:10).
25. Conical pithoi with vertical upper/middle sides: Forms 115–117; and conical pithos with convex side: Form 118 (scale 1:10).
26. Conical pithoi with convex sides: Forms 119–121; and tub pithos: Form 122 (scale 1:10).
27. Rope patterns: 1–5 and 7 (scale 1:1).
28. Rope patterns: 8–13 (scale 1:1).
29. Rope patterns: 14–16 and 18 (scale 1:1).
30. Rope patterns: 22–24 (scale 1:1).
31. Rope patterns: 26–28 (scale 1:1).
32. Rope patterns: 29–32 (scale 1:1).
33. Rope patterns: 33–36 (scale 1:1).
34. Raised band patterns: 1–3 (scale 1:1).
35. Raised band patterns: 4–7 (scale 1:1).
36. Raised band patterns: 8–11 (scale 1:1).
37. Raised band patterns: 12, 21, 23, and 24 (scale 1:1).
38. Raised band patterns: 25–28 (scale 1:1).
39. Raised band patterns: 32, 34, and 36 (scale 1:1).
40. Raised band patterns: 39–41 (scale 1:1).
41. Raised band patterns: 42, 46, and 47 (scale 1:1).
42. Raised band patterns: 48–51 (scale 1:1).
43. Raised band patterns: 66, 67, 69, and 71 (scale 1:1).
44. Raised band patterns: 73, 78, and 82–84 (scale 1:1).
45. Undulation of wavy ropes/bands in Arrangements 5, 19, 20, and 22–24.



List of Plates

All photos were taken by Christos Mbeltes unless otherwise credited.

1. Incised lines for the attachment of ropes/raised band patterns.
2. Rope patterns: 1, 4, 6, 8, 17, and 18 (K.S. Christakis).
3. Rope patterns: 19–21 and 24 (K.S. Christakis).
4. Rope patterns: 25–27 (K.S. Christakis).
5. Rope patterns: 29–32 and 37.
6. Raised band and rope patterns: Rope 11 and Bands 1, 13–15.
7. Raised band patterns: 16–18, 57, 60, and 68.
8. Raised band patterns: 19 and 20 (K.S. Christakis).
9. Raised band patterns: 22, 24, 25, and 29–31.
10. Raised band patterns: 33, 35, 37, 38, 43, and 44.
11. Raised band patterns: 45, 47, and 52–55.
12. Raised band patterns: 56–59.
13. Raised band patterns: 61–65.
14. Raised band patterns: 70–72 and 75–77.
15. Raised band patterns: 79–81 and 85.
16. Decorative patterns with raised band patterns of Group XI (K.S. Christakis).
17. Circle, concentric circle, and flower-like stamp impressions from Raised Band Pattern Group XII.
18. Various decorative patterns on pithoi from the West Magazines Complex of the palace of Knossos.
19. Reed and flower-like stamp impressions on raised bands and medallions on pithoi from Knossos.
20. Decorative patterns on pithoi from (a) the Royal Villa, Knossos and (b) Magazine XII in the West Magazines Complex of the palace of Knossos.
21. Decorative patterns on pithoi from (a) the palace and (b) House 2 at Galatas.

22. Decorative patterns on pithoi from (a) the Magazines of the Giant Pithoi, (b) Magazine IX, and (c) Magazine VI in the West Magazines Complex of the palace of Knossos.
23. Decorative patterns on the base of pithoi from (a) the palace of Galatas and (b) the Magazines of the Giant Pithoi from the palace of Knossos.
24. Pithoi from (a) the Room of the Giant Pithos, (b and c) Magazines X and IX in the West Magazines Complex, and (d) the South Propylaeum of the palace of Knossos.
25. Pithoi from (a and c) Magazines IV and V in the West Magazines Complex and (b and d) the South Propylaeum of the palace of Knossos.
26. Pithoi from (a and c) Magazine VIII, (b) Magazine IX, and (d) Magazine IV in the West Magazines Complex of the palace of Knossos.
27. Pithoi from (a, b, and d) Magazine IX and (c) the Long Corridor in the West Magazines Complex of the palace of Knossos.
28. Pithos from Magazine X in the West Magazines Complex of the palace of Knossos.



Acknowledgments

The pithos is one of the most distinctive utilitarian forms of the Cretan Bronze Age ceramic repertoire. Because of its use as a storage container, a pithos is the foremost parameter for the evaluation of the economic organization of palatial and domestic sectors of Cretan Bronze Age society. The pithoi as pottery and their significance for the understanding of Cretan Bronze Age economy has been the focus of a research project carried out from 1989 to 1999. The initial impetus for this study came in 1988 at the suggestion of C. Davaras to whom I would like to express my thanks. This book presents the results of the research on the patterns of production and consumption of storage containers. The importance of pithoi in understanding Cretan Bronze Age economy is discussed elsewhere (Christakis forthcoming).

Many institutions and excavators gave me permission to study unpublished and published material: the Greek Ministry of Culture, the Archaeological Society at Athens, the Italian Archaeological School at Athens, the American School of Classical Studies at Athens, the French School at Athens, M. Andreadaki-Vlazaki, E. Banou, the late W. Coulson, C. Davaras, L. Day, N. Dimopoulou, G. Gesell, L. Godart, E. and B. Hallager, D. Hatzi-Vallianou, S. Hood, A. Kanta, A. Karetsou, V. La Rosa, A. Lembesi, A. MacGillivray, S. Mandalaki, V. Ninou-Kindeli, N. Panagiotakis, L. Platon, the late N. Platon, the late M. Popham, J.-C. Poursat, G. Rethemiotakis, H. Sackett, I. Serpetsidaki, M. Tsipopoulou, Y. Tzedakis, A. Vasilakis, P. Warren, and A. Zois. Thanks are due to the Council of the British School at Athens for the permission to study and publish pithoi and selected ceramic deposits excavated by Sir Arthur Evans at Knossos.

A generous award from the Institute for Aegean Prehistory helped cover the expenses of drawing and photography. The research in the archaeological museums and sites of Crete has been facilitated by different individuals who served/serve as directors of the division for Prehistoric and Classical Antiquities for the Greek Ministry of Culture: M. Andreadaki-Vlazaki (22nd Ephoreia of Prehistoric and Classical Antiquities), A. Karetsou, E. Grammatikaki and N. Dimopoulou (23rd Ephoreia of Prehistoric and Classical Antiquities and the Herakleion Museum), the late N. Papadakis (24th Ephoreia of Prehistoric and Classical Antiquities). Special thanks are due to the Curators of the 23rd Ephoreia of Prehistoric and Classical Antiquities, V. Marsellou and I. Serpetsidaki, and to P. Sinadinakis, the chief conservator of the Herakleion Museum, for facilitating my study in the Herakleion Museum, the successive Knossos Curators, C.

Macdonald, E. Hatzaki, and D. Evely, and the guards of the archaeological site of Knossos.

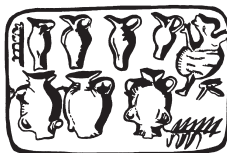
My debt is great to N. Ntolia for the drawings and for being generous with her time and to C. Mbeltes for the photographs. Thanks are due to the staff of INSTAP Academic Press, particularly to S. Ferrence, for their patience, perseverance, and faith in the final outcome. My deep thanks are also due to Phil Betancourt and the anonymous reviewers of this book who offered many valuable suggestions.

I would like to thank F.M. Carinci who has substantially contributed to an initial stage of this research and M. Tsipopoulou for introducing me to pottery studies. I am deeply indebted to G. Rethemiotakis for his generosity and fruitful discussions about Bronze Age Crete. R. Evershed has contributed to this research through analyses of organic residues, and K. Ploumaki, I. Telakis, and I. Xatzinikolakis, potters from Thrapsano, provided crucial information on technological issues and patterns of production and distribution of storage containers in pre-industrial Crete.

My research over the years benefited from stimulating discussion with I. Andonakaki, M. Andreadaki-Vlazaki, E. Banou, C. Beedel, P. Betancourt, H. Blitzer, K. Branigan, T. Brogan, F.M. Carinci, L. Day, P. Day, N. Dimopoulou, R. Harrison, I. Hatzakis, B. Hayden, S. Hood, V. Karageorghis, A. Karnava, C. Knappett, K. Kopaka, D. Kringa, V. La Rosa, A. Lembesi, C. Macdonald, S. Mandalaki, P. Metaxa-Muhly, D. Mitilinaïou, N. Momigliano, M. Mook, W. Niemeier, E. Nodarou, N. Panagiotakis, G. Pantou, L. Platon, J.-C. Poursat, L. Rahmstorf, D. Rousioti, I. Serpetsidaki, A. Simandiraki, the late S. Spanakis, S. Spiliotopoulos, M. Tsipopoulou, Z. Tsitsroni, A. van de Moortel, A. Vasilakis, V. Watrous, M. Wiener, and M. Zeimbeki. Special thanks are due to E. Hatzaki for discussing questions on production and consumption of Knossian ceramics, I. Nikolakopoulou for discussion on storage containers excavated at Akrotiri, Thera, and K. Archondaki for sharing her knowledge of eastern Cretan pottery matters. Last but not least, M. Panagiotaki and D. Evely offered useful advice and critiques. As always, none of the people mentioned above should be held accountable for any deficiencies or obscurities in this study.

Above all, I should like to express my greatest debt of gratitude to P. Warren, who has been a constant source of sound advice and inspiration, and whose critical comments contributed substantially to this study. This work is dedicated to him as a small token of my gratitude.

Herakleion, August 2004



Abbreviations

AE/NB	Evans, A. <i>Manuscript Daybooks on the Excavations at Knossos</i> , Knossos Archives, Ashmolean Museum, Oxford.
<i>Βασιλικά</i>	Zepos, I., ed. 1910–1912. <i>Βασιλικά</i> I–V, Athens.
DM/NB	Mackenzie, D. <i>Manuscript Daybooks on the Excavations at Knossos</i> , Knossos Archives, Ashmolean Museum, Oxford.
F/NB	Fyfe, T. <i>Manuscript Notebooks (Sketchbooks) on the Excavations at Knossos</i> , Knossos Archives, Ashmolean Museum, Oxford.
<i>Geoponica</i>	Beckh, H., ed. 1895. <i>Geoponica Sive Cassiani Bassi Scholastici de Re Rustica, Ecologiae</i> , Lepsia.
<i>Gorgias</i>	Hermann, C.F., ed. 1885. <i>Platonis. Charmides, Laches, Lysis</i> III, Lepsia.
<i>PG</i>	Migne, P., ed. 1857–1866. <i>Patrologiae Cursus Completus, Series Graeca</i> , Paris.
<i>PM I</i>	Evans, A.J. 1921. <i>The Palace of Minos at Knossos</i> I, London.
<i>PM II</i>	Evans, A.J. 1928. <i>The Palace of Minos at Knossos</i> II, London.
<i>PM III</i>	Evans, A.J. 1930. <i>The Palace of Minos at Knossos</i> III, London.
<i>PM IV</i>	Evans, A.J. 1935. <i>The Palace of Minos at Knossos</i> IV, London.
<i>Σχόλια Θεοκρίτου</i>	Wendel, C., ed. 1914. <i>Scholia in Theocritum</i> , Lepsia.
ANM	Agios Nikolaos Archaeological Museum
CHM	Chania Archaeological Museum
HM	Herakleion Archaeological Museum
IM	Ierapetra Archaeological Collection
KSM	Knossos Stratigraphical Museum
SM	Siteia Archaeological Museum

AK	Akrotiri, Thera inventory number
GSM	Kastelli Chania inventory number
SMP	Knossos Stratigraphical Museum pot inventory number
EM	Early Minoan
MM	Middle Minoan
LBA	Late Bronze Age
LC	Late Cycladic
LM	Late Minoan