

An Archaeological Palimpsest in Minoan Crete

Tholos Tomb A and Habitation at Apesokari Mesara



PREHISTORY MONOGRAPHS 70

An Archaeological Palimpsest in Minoan Crete
Tholos Tomb A and Habitation at Apesokari Mesara

By

Georgia Flouda

With contributions by

Maciej Chyleński, Sylviane Déderix, Doniert Evely, Anna
Juras, Olga Krzyszkowska, Argyro Nafplioti, Michael Nelson,
Niki Papakonstantinou, Sevi Triantaphyllou, and Basilios Tsikouras



Published by
INSTAP Academic Press
Philadelphia, Pennsylvania
2023

Design and Production
INSTAP Academic Press, Philadelphia, PA

Printing and Binding
Integrated Books International, Dulles, VA

INSTAP Academic Press, a part of the Institute for Aegean Prehistory (INSTAP), was established to publish projects relevant to the history of the Aegean world, in particular from the Paleolithic to the 8th century B.C. It is a scholarly nonprofit publisher specializing in high-quality publications of primary source material from archaeological excavations as well as individual studies dealing with material from the prehistoric periods—exemplified by its *Prehistory Monographs* series of volumes. INSTAP is committed to engaging a variety of audiences by disseminating knowledge through its scholarly publishing program, which produces award-winning monographs that are both academically and popularly acclaimed.

Library of Congress Cataloging-in-Publication Data

Names: Flouda, Georgia, 1974- author.

Title: An archaeological palimpsest in Minoan Crete : Tholos tomb A and habitation at Apesokari Mesara / by Georgia Flouda ; with contributions by Maciej Chyleński [and 9 others].

Description: Philadelphia : INSTAP Academic Press, 2022. | Series: Prehistory monographs ; 70 | Includes bibliographical references and index. | Summary: "This publication presents the archaeological evidence from two associated Minoan sites situated at Apesokari in the Mesara Plain of south-central Crete, Tholos Tomb A and the neighboring free-standing domestic complex on Vigla Hill. It thoroughly reconstructs the natural and social landscape of this Cretan community from the late Prepalatial to the early Neopalatial periods through its interdisciplinary character; this includes photogrammetric two- and three-dimensional models of the architectural remains, viewshed analysis of both monuments and of the earlier Tholos Tomb B, as well as A-DNA and stable isotope analysis of the bones. The study of the burial dataset provides insights into the social construction of collective memory and identity by the burying social group, whereas the habitational deposits from the building on Vigla Hill establish the longevity and function of the site as a node of the southern Mesara communication and exchange networks"-- Provided by publisher.

Identifiers: LCCN 2022036191 (print) | LCCN 2022036192 (ebook) | ISBN 9781931534352 (hardback) | ISBN 9781623034405 (adobe pdf)

Subjects: LCSH: Minoans--Greece--Mesara Plain. | Tombs--Greece--Mesara Plain. | Mesara Plain (Greece)--Antiquities. | Excavations (Archaeology)--Greece--Mesara Plain. | Mesara Plain (Greece)--Buildings, structures, etc. | Crete (Greece)--Antiquities.

Classification: LCC DF221.C8 F57 2022 (print) | LCC DF221.C8 (ebook) | DDC 939/.18--dc23/eng/20220815

LC record available at <https://lcn.loc.gov/2022036191>

LC ebook record available at <https://lcn.loc.gov/2022036192>

Front cover: view of Tholos Tomb A and its surroundings from the west, with Vigla Hill in background; photo G. Flouda. Jug from Tholos Tomb A; photo C. Papanikolopoulos, © Herakleion Archaeological Museum.

Back Cover, left, top to bottom: view of Vigla Hill from the south; photo G. Flouda. Portrait of the author; photo FotoMaris Studio. Right, top to bottom: stone tumbler, stone idol, and pitharaki from Tholos Tomb A; photos C. Papanikolopoulos, © Herakleion Archaeological Museum.

Copyright © 2023
INSTAP Academic Press
Philadelphia, Pennsylvania
All rights reserved
Printed in the United States of America

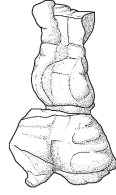


Table of Contents

List of Tables	vii
List of Figures	ix
List of Plates	xv
Acknowledgments	xxi
List of Abbreviations	xxiii
PART I. THOLOS TOMB A	
1. Introduction and Scope, <i>Georgia Flouda</i>	3
2. A Local Burial Landscape: Theoretical Premises and Methodology, <i>Georgia Flouda</i>	7
3. History of Excavation, <i>Georgia Flouda</i>	11
4. Architecture of Tholos Tomb A, <i>Michael Nelson and Georgia Flouda</i>	15
5. Placing Tholos Tomb A in the Visual Landscape of Apesokari, <i>Sylviane Déderix</i>	21
6. Clay and Stone Finds from Tholos Tomb A, <i>Georgia Flouda</i>	31
7. Evidence from Human Remains, <i>Sevi Triantaphyllou and Niki Papakonstantinou</i>	49
8. Ancient DNA Analysis of the Human Skeletal Assemblage: A Pilot Study of Prepalatial and Proto-palatial Southern Mesara in Crete, <i>Anna Juras, Maciej Chyleński, and Argyro Nafplioti</i>	59

PART II. BUILDING ON VIGLA HILL

9. Introduction, Architecture, and Layout, <i>Georgia Flouda</i>	65
10. Stratigraphy and Clay Finds from the Vigla Building, <i>Georgia Flouda</i>	75
11. A Survey by Space: Pottery Sequences and Diachronic Use, <i>Georgia Flouda</i>	127
12. Stone Objects and Shells, <i>Doniert Evely</i>	133

PART III. LIVING WITH THE DEAD: LANDSCAPE, ANCESTORS, AND AGENCY AT APESOKARI

13. Finds and Space as Evidence for Function and Use of the Domestic Areas at Vigla, <i>Georgia Flouda</i>	141
14. Mortuary Practices: Burial, Curation of Human Remains, and Identity, <i>Georgia Flouda</i>	149
15. Conclusions: Notions of Identity and Agency at Apesokari, <i>Georgia Flouda</i>	163
Appendix A. Seals in the Giamalakis Collection Attributed to Apesokari, <i>Olga Krzyszkowska</i>	169
Appendix B. Petrographic Classification of Stone Objects from Apesokari by Raman Spectroscopy, <i>Basilios Tsikouras</i>	177
References	183
Index	211

Tables

Figures

Plates



List of Tables

- | | |
|-----------|--|
| Table 1. | Widths of individual walls of Tholos Tomb A. |
| Table 2. | Distribution of individuals in Tholos Tomb A by age and sex group. |
| Table 3. | Element zones present in Tholos Tomb A by side. |
| Table 4. | Inventory of minimum number of elements and minimum number of individuals by age group from Tholos Tomb A. |
| Table 5. | Minimum number of elements recovered from Tholos Tomb A compared to number of bones expected for 13 individuals. |
| Table 6. | Bone representation index of the cranial elements found in Tholos Tomb A. |
| Table 7. | Elements from Tholos Tomb A that provided measurements for estimation of stature. |
| Table 8. | Mean stature of individuals found in Tholos Tomb A. |
| Table 9. | Carbon and nitrogen isotope data for bone samples from Tholos Tomb A that yielded efficient collagen. |
| Table 10. | Provenance and description of the analyzed aDNA samples from Tholos Tomb A. |
| Table 11. | Sequencing results for analyzed individuals from Apesokari Tholos Tomb A and Porti Tholos Tomb P. |
| Table 12. | Statistical analysis of pottery from Deposit 1. |
| Table 13. | Statistical analysis of pottery from Deposit 1b. |

Table 14.	Statistical analysis of pottery from Deposit 2.
Table 15.	Statistical analysis of pottery from Deposit 2b.
Table 16.	Statistical analysis of pottery from Deposit 2c.
Table 17.	Statistical analysis of pottery from Deposit 3.
Table 18.	Statistical analysis of pottery from Deposit 4.
Table 19.	Statistical analysis of pottery from Deposit 5.
Table 20.	Statistical analysis of pottery from Deposit 6.
Table 21.	Statistical analysis of pottery from Deposit 7.
Table 22.	Statistical analysis of pottery from Deposit 8.
Table 23.	Statistical analysis of pottery from Deposit 9.
Table 24.	Statistical analysis of pottery from Deposit 10.
Table 25.	Statistical analysis of pottery from Deposit 11.
Table 26.	Statistical analysis of pottery from Deposit 12.
Table 27.	Statistical analysis of pottery from Deposit 13.



List of Figures

- Figure 1. Map of the Mesara Plain with sites mentioned in the text.
- Figure 2. Contour map of the Apesokari area showing Tholoi A and B and the building on Vigla Hill.
- Figure 3. Plan of Tholos Tomb A showing the burial chamber (A), annex rooms (B–G), spaces (H, J), entrance (K), and altar (L).
- Figure 4. Elevation of Tholos Tomb A (burial chamber and annex rooms).
- Figure 5. Size-sensitive viewshed of Tholos Tomb A.
- Figure 6. Size-sensitive viewshed of Tholos Tomb B.
- Figure 7. Size-sensitive viewshed of a target located 50.00 m east of Tholos Tomb A.
- Figure 8. Visibility from the two tombs (left) and of the two tombs (right) at Apesokari.
- Figure 9. Cumulative viewsheds of tholos tombs in the Hagiofarango Valley.
- Figure 10. Hierarchical communication network based on the location of tholos tombs in South-Central Crete.
- Figure 11. Optimal paths around Apesokari.
- Figure 12. Size-sensitive viewshed of Tholos Tomb A in relation to the optimal path connecting the Mesara Plain and the central Asterousia Mountains through Apesokari.

- Figure 13. Size-sensitive viewshed of Tholos Tomb A (in relation to the optimal path between the Mesara Plain and the central Asterousia Mountains), if its burial chamber had been constructed in place of the annex rooms.
- Figure 14. Clay finds and stone finds from the burial chamber (Room A) of Tholos Tomb A: juglet (P1), cup (P2), jug (P3), pedestaled lamp (P4), cup lamp (P5), bird's-nest bowl (SV1), bowl (SV2), lid (SV3).
- Figure 15. Clay finds from Room D: cups (P6, P8, P9, P12, P13, P15, P18–P25, P40), teapot (P7).
- Figure 16. Clay finds from Room D: cups (P41, P48, P86, P93–P95, P102–P104, P106, P107, P110, P113, P115).
- Figure 17. Clay finds from Rooms E and G: clay wine-press model (P118), collar-necked jar (P119), lid (P120).
- Figure 18. Clay finds from Room G: larnax (P121), larnax lid (P122), elliptical larnax (P123), elliptical bathtub larnax (P124), pithos (P125).
- Figure 19. Stone finds from Room G: tumbler (SV4), bird's-nest bowls (SV5–SV8), bowls (SV9, SV10), stone idol (SII). Clay finds from the paved area of Tholos Tomb A: teapot (P126), jug (P127).
- Figure 20. Clay finds from the paved area of Tholos Tomb A: bowl (P128), jugs (P129, P130), cups (P131–P133).
- Figure 21. Clay and stone finds from the paved area of Tholos Tomb A: cup (P134), pitharaki (P135), tumblers (SV11–SV14), bowls (SV15, SV16), alabastron (SV17).
- Figure 22. Stone finds from the paved area of Tholos Tomb A: bird's-nest bowls (SV18–SV27).
- Figure 23. Bone representation index of the human remains from Tholos Tomb A.
- Figure 24. Bone representation index of the human remains from Tholos Tomb A by bone category.
- Figure 25. Bone completeness of the human remains from Tholos Tomb A.
- Figure 26. Preservation status of the skeletal elements from Tholos Tomb A.
- Figure 27. Human collagen $\delta^{13}\text{C}$ and $\delta^{15}\text{N}$ values from Tholos Tomb A.
- Figure 28. Two-dimensional state plan of the Vigla Building.
- Figure 29. Longitudinal cross-section A–A' of the Vigla Building (east–west).
- Figure 30. Cross-section B–B' of the Vigla Building (north–south).
- Figure 31. Pottery from the pottery group of Deposit 1: pitharaki (P136), closed vessel (P137), basin (P139), tripod cooking pot (P142), drainpipe or gutter fragment (P143), scored basin (P144), pithos rim (P145), bridge-spouted jar (P146), ewer (P147).
- Figure 32. Pottery from Deposit 1b: closed vessel (P153), askoid jug (P154), pithos (P156), oval-mouthed amphora (P159), ledge-rim bowls (P160–P163).
- Figure 33. Pottery from Deposit 1b: pithos (P164), closed vessels (P165, P166), ledge-rim bowl (P169), fruitstand (P170), ledge-rim bowl/fruitstand (P171), spouted basin (P172), kalathos (P173).
- Figure 34. Pottery from Deposit 1b: oval-mouthed amphora (P174), tubes (P176, P176a, P177).
- Figure 35. Pottery from Deposits 1b and 2: tubes (or stands) (P178, P179), bridge-spouted jars (P184–P190), oval-mouthed amphora (P191), oval-mouthed amphoriskos (P192), pithos lid (P196).

- Figure 36. Pottery from Deposit 2: stamnoid pitharaki (P198), pithos (P201), bridge-spouted jars (P202, P203), basin (P207), cooking jar (P210).
- Figure 37. Pottery from Deposits 2 and 2b: cooking jug (P211), saucer (P212), tripod cooking tray (P214), cooking dishes (P216a–P216f), bucket jar (P221).
- Figure 38. Pottery from Deposits 2b and 2c: pithos (P222), teapot (P227), closed vessel (P228), pitharaki (P229, P230), juglet (P231), pitharaki (P233), globular jar(?) (P234), bridge-spouted basin (P237), goblet (P238).
- Figure 39. Pottery from Deposit 2c: handleless cups (P240, P242, P245), S-profile cups (P243, P246, P250, P251), tripod vessel (P247), tripod cups (P248, P249), conical bowl (P252).
- Figure 40. Pottery from Deposit 2c: S-profile cup (P253), handleless cups (P254, P258, P259), S-profile or ogival cups (P255, P256), bell cup (P257), pulled-rim bowls (P260, P261), kylikes (P262–P265).
- Figure 41. Pottery from Deposits 2c and 3: pedestal-footed bowl (P270), pithoi (P271, P280), juglet (P272), bull or other bovid figurine (P273), loomweights (P274, P275), trapezoidal box (P276), hand lamp (P278).
- Figure 42. Pottery from Deposit 3: collar-necked jar (P281), jar (P282), pithoi (P284, P285).
- Figure 43. Pottery from Deposits 3 and 4: slab-shaped object (P287), oval-mouthed amphora (P289), S-profile cup (P290), closed vessels (P291, P299), open-spouted jars (P292, P294), lid (P296), trefoil-mouthed jug (P298).
- Figure 44. Pottery from Deposit 4: oval-mouthed amphora (P300), handleless bowl (P303), open-spouted jar (P305), closed vessels (P306, P308), beak-spouted jug (P307), spouted piriform jar (P309), basin (P316).
- Figure 45. Pithos (P319) from Deposit 4.
- Figure 46. Pottery from Deposit 4: pithoi (P320, P322, P324), jug (P327), tripod cooking pots (P328, P329).
- Figure 47. Pottery from Deposit 5: closed vessel (P331), lid (P332), bridge-spouted jar (P333).
- Figure 48. Pottery from Deposit 5: basin (P336), pithoi (P340, P342), pithos lid (P341).
- Figure 49. Pithos (P343) from Deposit 5.
- Figure 50. Pottery from Deposits 5 and 6: slab-shaped objects (P344, P345), oval-mouthed amphora (P346), bridge-spouted jars (P347, P350), pitharaki (P352).
- Figure 51. Pottery from Deposit 6: tubular-spouted jar (P353), bowl (P354), oval-mouthed amphorae (P357, P358).
- Figure 52. Pottery from Deposits 6 and 7: closed vessels (P359, P375), bowl (P360), handleless cups (P362, P363), loop-handled bowl (P365), hand lamp (P366), firebox (P367), pyxis (P368), spouted cup (P371), ring-shaped kernos (P372), straight-sided cup (P373).
- Figure 53. Pottery from Deposits 7 and 8: basin (P376), juglet (P378), handleless cups (P380–P382, P384–P386), bell cup (P383), teacup (P387), kados (P388), wide-mouthed jar (P389).
- Figure 54. Pottery from Deposits 8 and 9: jar (P390), pithoid jar (P391), bridge-spouted jars (P395–P397, P399, P400).

- Figure 55. Pottery from Deposit 9: bridge-spouted jar (P402), closed vessel (P403), hole-mouthed jar (P406), fire box (P407).
- Figure 56. Pottery from Deposit 9: oval-mouthed amphora (P408), jug with cutaway spout (P409), basin (P411), S-profile cups (P412, P412a [base], P413), handleless cup (P414).
- Figure 57. Pottery from Deposit 9: straight-sided cups (P415, P420), S-profile cups (P416–P418, P421, P423, P424), bowl with flattened rim and lugs below rim (P422), handleless cup (P425).
- Figure 58. Pottery from Deposit 9: handleless cups (P426, P427), pithoid jar (P429), jars (P433, P434).
- Figure 59. Pottery from Deposit 9: milk jug (P436), cooking dishes (P437, P438), rectangular pyxis (P440).
- Figure 60. Pottery from Deposit 9: handleless cup (P441), oval-mouthed amphora (P442), closed vessel (P443), beak-spouted jug (P444), bowl (P445), basins (P446, P447a–P447c).
- Figure 61. Pottery from Deposits 9 and 10: handleless cup (P448), basin (P449), pithos (P453), closed vessels (P454, P455), S-profile cups (P456, P457), collar-necked jar (P458), bridge-spouted jars (P459, P460).
- Figure 62. Pottery from Deposit 10: oval-mouthed amphora (P461), lid or “spinning-bowl” (P463), cooking dish (P469), ledge-rim handleless cup (P471), basin (P472), straight-sided cups (P473, P481, P484, P485), amphoriskos (P475), pyxis (P477), jug(?) (P478), strainer jar (P480).
- Figure 63. Pottery from Deposit 10: large-handled cup or bell cup (P486), spouted pithoid jar (P487), closed vessel (P488), pithos (P489), pithoid jar (P490), hole-mouthed jar (P491).
- Figure 64. Pottery from Deposit 10: basin (P493), straight-sided cup (P494), basin (P495), biconical weight (P496), open-rim jar (P497), wide-mouthed jug (P498), bridge-spouted jar (P499), askoid jug (P500).
- Figure 65. Pottery from Deposit 10: oval-mouthed amphora (P501), bridge-spouted jars (P502, P503), miniature bridge-spouted jar (P504), hemispherical basin (P505), handleless cup (P506).
- Figure 66. Pottery from Deposit 10: pithoi (P508, P510, P512–P514), fruitstand (P509), jug (P511), ledge-rim bowl (P515).
- Figure 67. Pottery from Deposit 10: lid (P516), shallow cup (P518), oval-mouthed amphora (P519), pithos (P522).
- Figure 68. Pottery from Deposit 10: pithoi (P531, P532), basins (P533, P534).
- Figure 69. Pottery from Deposits 10 and 11: basins (P535, P539), bowl (P536), hand lamp (P537), pithoid jar (P538), pedestaled baking plate (P540), narrow-necked jug (P541).
- Figure 70. Pottery from Deposit 11: miniature closed(?) vessel (P542), pitharaki handle (P543), bridge-spouted jar (P545), oval-mouthed amphora (P546), beak-spouted jug (P547), ledge-rim handleless cups (P548–P553).
- Figure 71. Pottery from Deposit 11: ledge-rim handleless cups (P554–P556, P562–P566), handleless bowls (P557–P559, P567, P568), saucers (P560, P561), handleless cup (P569).
- Figure 72. Pottery from Deposit 11: S-profile cup (P570), jar (P571), ledge-rim bowl (P575), juglet (P574), pithos (P576), pithoid jars (P581, P582), pithoid jar or basin (P589).
- Figure 73. Pottery from Deposits 11 and 12: ledge-rim handleless cups (P591), large-mouthed jar (P592), cooking tray (P594), spouted cooking tray (P595), pyxis (P597), wide-mouthed jar (P599), pitharaki (P602), bridge-spouted jar (P604).

- Figure 74. Pottery from Deposit 12: pyxis (P605), handleless cups (P607, P608, P612), skyphoid cup (P609), spouted cup (P610), carinated cup (P611), bowl (P613), straight-sided cup (P614).
- Figure 75. Pottery from Deposit 12: kalathos or “basket” cup (P615), straight-sided cup (P616), S-profile bowl (P617), teacup with offset base (P618), handleless cup (P619), stamnoid jar (P621, P621a), bridge-spouted jar (P623), bowl (P627), saucer (P628).
- Figure 76. Pithos (P629) from Deposit 12.
- Figure 77. Pottery from Deposit 12: kados (P630), pithos (P631), footed tray(?) (P633), slab-shaped object (P635).
- Figure 78. Pottery from Deposit 13 and without established provenance: beak-spouted jug with scoop (P637), oval-mouthed amphoriskos (P638), pithos (P642).
- Figure 79. Pottery without established provenance: pithos lid (P647), handleless wide-mouthed jug (P648), miniature jug (P649).
- Figure 80. Pottery without established provenance: kados or pithos (P650), angular teapot (P653), jar (P654), wide-mouthed jar (P656), pithoid jar (P658), bottle (P661), pitharaki (P662).
- Figure 81. Pottery without established provenance: bridge-spouted jar (P663), closed vessel (P664), deep bowl (P668), two-handled bowl (P669), basin (P670), carinated cups (P672, P674), side-spouted straight-sided cup(?) (P675), straight-sided cup (P676).
- Figure 82. Pottery without established provenance: tall-rimmed carinated cups (P677, P678), tumbler (P680), bowl (P681), S-profile bowls (P683, P684, P687, P689–P690), S-profile cups (P685, P686, P688).
- Figure 83. Pottery without established provenance: S-profile cups (P691, P695, P697, P705, P706), straight-sided cups (P693, P698, P699), basins (P694, P700), handleless cup (P696), rounded bowl (P707).
- Figure 84. Pottery without established provenance: two-handled hemispherical cup (P711), S-profile cups (P712, P716, P720), handleless bowl (P713), bowl (P714), basin (P718), open vessel (P719), teacup (P721), in-and-out bowl (P723), ledge-rim bowl (P724).
- Figure 85. Pottery without established provenance: ledge-rim basin (P725), handleless rounded cups (P727, P728), S-profile cups (P729–P732, P734), in-and-out bowls (P735, P736), blob cup (P737).
- Figure 86. Pottery without established provenance: hemispherical cups (P738, P740), hemispherical bowl (P739), pithoid jar (P743), pithoi (P744, P745), stand or fruitstand (P747), wide-necked jar (P749).
- Figure 87. Pottery without established provenance: tripod cooking trays (P755, P756), basins (P757, P769), pithoi (P762, P763, P766, P770), clay spit rest (P767).
- Figure 88. Stone objects from the Vigla Building: grinder-pounder (S1), polisher (S2), grinder (S3), grinder-crushers or pounders (S4–S6), polisher-burnisher (S7).
- Figure 89. Stone objects from the Vigla Building: “pestle” (S8), grinder-crusher or pounder (S9), weight (S10), burnisher or whetstone (S11), door-socket or mortar (S12), working surface (S13).
- Figure 90. Stone objects from the Vigla Building: quern (S14), grinder-crusher (S16), pebble (polisher?) (S17), stalagmite (S18), pecking tool (S19), blade (S20).

- Figure 91. Stone objects from the Vigla Building: lump of pumice (**S21**), vase (**SV28**), bowl (**SV29**), fragment of table or base (**SV30**).
- Figure 92. Simplified tectono-stratigraphic section of Crete.
- Figure 93. Raman spectra from **SV2**, **SV10**, and **SV16**
- Figure 94. Raman spectra from selected stone vessels of diabase from Tholos Tomb A at Apesokari
- Figure 95. Raman spectra from **SV5**, **SV7**, and **SV23**.



List of Plates

- Plate 1. Three-dimensional model of Tholos Tomb A.
- Plate 2A. View of Tholos Tomb A and its surroundings from the west, with Vigla Hill in background.
- Plate 2B. View of Vigla Hill from the north.
- Plate 3A. August Schörgendorfer, wearing the *Wehrmacht* uniform, along with his team during the excavation of Tholos Tomb A in 1942.
- Plate 3B. Local villager and child who participated in Schörgendorfer's excavation of Tholos Tomb A in 1942.
- Plate 4A. Tholos Tomb A annex and the paved area in 1942, from the north.
- Plate 4B. View of the burial chamber in Tholos Tomb A from the southeast.
- Plate 5A. The burial chamber in Tholos Tomb A from the southeast.
- Plate 5B. Tholos Tomb A annex from the southeast.
- Plate 6A. Tholos Tomb A annex from the north.
- Plate 6B. Detail of Rooms C, D, and G with cuttings in the bedrock, from the southeast.
- Plate 7A. Room G and cuttings in the bedrock east of Rooms C and D, from the west.
- Plate 7B. Doorway of Tholos Tomb A showing the shallow step into the circular chamber, from the east.

- Plate 8A. Low scarp east of Tholos Tomb A from where the building material was probably quarried, from the southeast.
- Plate 8B. Local limestone deposits east of Tholos Tomb A, from the northeast.
- Plate 9. Exterior face of the north wall of Tholos Tomb A showing the protruding wedgelike stone, from the north.
- Plate 10A. Detail of the east facade of Tholos Tomb A with Doorway K in the foreground, from the east.
- Plate 10B. Circular pivot hole of Doorway K, from the east.
- Plate 11A. View of Room G showing the pillar in 1942, from the west.
- Plate 11B. Rooms C and D with detail of the bedrock, from the south.
- Plate 12A. External rubble face of Wall 1 from the east.
- Plate 12B. External rubble face of Wall 1 from the west.
- Plate 13A. Detail of the point where the west end of Wall 1 abuts the tholos wall, from the north.
- Plate 13B. Entrance to the burial chamber from the east.
- Plate 14. Clay finds and stone finds from the burial chamber of Tholos Tomb A: juglet (P1), cup (P2), jug (P3), pedestaled lamp (P4), bird's-nest bowl (SV1), bowl (SV2), lid (SV3).
- Plate 15. Clay finds from Room D: cups (P6, P8–P19), teapot (P7).
- Plate 16. Clay finds from Room D: cups (P20–P39).
- Plate 17. Clay finds from Room D: cups (P40–P58).
- Plate 18. Clay finds from Room D: cups (P59–P79).
- Plate 19. Clay finds from Room D: cups (P80–P98).
- Plate 20. Clay finds from Room D: cups (P99–P117).
- Plate 21. Clay finds from Rooms E and G: clay wine-press model (P118), collar-necked jar (P119), lid (P120), larnax (P121).
- Plate 22. Clay finds from Room G: larnax lid (P122), elliptical larnax (P123), pithos (P125).
- Plate 23. Stone finds from Room G: tumbler (SV4), bird's-nest bowls (SV5–SV8), bowls (SV9–SV10), stone idol (SI1).
- Plate 24. Clay finds from the paved area of Tholos Tomb A: teapot (P126), jugs (P127, 129), bowl (P128), cups (P131–P134), pitharaki (P135).
- Plate 25. Stone finds from the paved area of Tholos Tomb A: tumblers (SV11–SV16), alabastron (SV17), bird's-nest bowls (SV18–SV27).
- Plate 26A. Almost complete cranium K7 from Tholos Tomb A, which provided more accurate age determination based on the degree of cranial suture closure.
- Plate 26B. Femur diaphysis from Tholos Tomb A showing modification from insect activity: sub-parallel striations and etching of the periosteal surface.
- Plate 27A. Porotic hyperostosis in the form of small and large scattered foramina on the frontal bone of cranium K6 from Tholos Tomb A.

- Plate 27B. Cribra orbitalia in the left eye orbit of an adult female individual found in Tholos Tomb A.
- Plate 28A. Right frontal bone from Tholos Tomb A showing a possible healed depressed fracture.
- Plate 28B. Mandible from Tholos Tomb A showing severe antemortem tooth loss and alveolar bone resorption throughout the mandibular arch.
- Plate 29A. View of Vigla Hill, the Psiloritis mountain range, and the western Mesara Plain, from the south.
- Plate 29B. The Vigla Building, from the south.
- Plate 30A. View of the karst landscape of Vigla Hill, southeast of the steep rocky mass at Oksys, from the north.
- Plate 30B. Detail of Vigla Hill's limestone beds, from the northwest.
- Plate 31A. Waterfall at Oksys, from the north.
- Plate 31B. View of the Vigla Building and the modern road to Miamou and Lendas, from the north, in 2010.
- Plate 32A. Traces of a possible wall on the hilltop in 2010, from the northeast.
- Plate 32B. Detail of Vigla Hill's bedrock, which has been carved out to accommodate foundations, from the north.
- Plate 33A. Course, terrace, or retaining wall on the northwest slope of Vigla Hill, from the northwest.
- Plate 33B. View of the limestone quarry west of Vigla Hill, at the site of Laganás, from the east.
- Plate 34. Perspective-view model of the Vigla Building.
- Plate 35A. Orthographic longitudinal cross-section A–A' of the Vigla Building (east–west).
- Plate 35B. Orthographic cross-section B–B' of the Vigla Building (north–south).
- Plate 36A. View of Rooms A, B, and D and Space C in 2014, from the north.
- Plate 36B. Detail of the southeast corner of the Vigla Building, east of elongated Space III, in 2015, from the south.
- Plate 37A. Vigla Building: view of north part of Room D with Room B in the background, in 2014, from the east.
- Plate 37B. Vigla Building: view of Rooms A and B in 2014, from the north.
- Plate 38A. Vigla Building: view of Room A in 2014, from the east.
- Plate 38B. Vigla Building: detail of the worked bedrock cliff face in Room D in 2014, from the west.
- Plate 39A. Vigla Building: Rooms A, B, and D and Storeroom I in 2014, from the north.
- Plate 39B. Vigla Building: Storeroom I in 2015, from the east.
- Plate 40. Vigla Building: Space III in 2015, from the south.
- Plate 41. Pottery from Deposits 1 and 1b: pitharaki (**P136**), trefoil-mouthed jug (**P149**), pithoid jar (**P152**), askoid jug (**P154**).
- Plate 42. Pottery from Deposits 1b and 2: miniature tray (**P157**), jug (**P167**), fruitstand (**P170**), cylindrical tubes (**P176**, **P176a**, **P179**), miniature teapot (**P182**), jug (**P194**).

- Plate 43. Pottery from Deposits 2, 2b, 2c, and 3: askoid jug (P200), jar (P209), cooking trays (P213, P225), bridge-spouted basin (P237), kylix (P266), bull figurine (P273), lamp (P278).
- Plate 44. Pottery from Deposit 3: collar-necked jar (P281), jar (P282), pithoid jar (P286), and slab-shaped object (P287).
- Plate 45. Pottery from Deposits 3 and 4: pithoid jar (P288), closed vessel (P291), open-spouted jars (P293, P305), lid (P296), hole-mouthed jar (P301, P301b), hand lamp (P302), jar (P304).
- Plate 46. Pottery from Deposit 4: jug (P307), closed vessels (P308, P311), spouted basin (P315), pithoi (P319, P322), spouted tripod cooking pot (P329).
- Plate 47. Pottery from Deposit 5: closed vessel (P331), lid (P332), bridge-spouted jar (P333), pithos rim and base (P334, P335).
- Plate 48. Pottery from Deposit 5: pithoi (P342, P343), slab-shaped object (P345 [profile and front]).
- Plate 49. Pottery from Deposits 5 and 6: oval-mouthed amphorae (P346, P357), bridge-spouted jar (P350), jug (P351), bowl (P354).
- Plate 50. Pottery from Deposits 6–9: bridge-spouted jars (P361, P394, P402), straight-sided cup (P373), closed vessels (P374, P403, P405), Palace Style vase (P375), hole-mouthed jar (P406), and firebox (P407).
- Plate 51. Pottery from Deposit 9: oval-mouthed amphora (P408), jug with cutaway spout (P409), S-profile cup (P413), straight-sided cups (P419, P420), bowl (P422), handleless cup (P425), pithoid jar (P429).
- Plate 52. Pottery from Deposits 9 and 10: cooking dish (P437), handleless cup (P441), oval-mouthed amphorae (P442 [before full restoration], P461), basin (P449), lid or “spinning bowl” (P463), cooking tray (P468), cooking dish (P469), ledge-rim handleless cup (P471), straight-sided cup (P473), hole-mouthed jar (P491).
- Plate 53. Pottery from Deposit 10: spouted bowl or jar with horizontal side handles (P492), clay weight (P496), wide-mouthed jug (P498), askoid jug (P500), oval-mouthed amphora (P501), jar (P520).
- Plate 54. Pottery from Deposits 10 and 11: basin (P535), bowl (P536), pitharaki (P543), miniature juglet (P574), pithos (P578), basin (P587), cooking trays (P594, P595), pyxis (P597), bridge-spouted jar (P600).
- Plate 55. Pottery from Deposits 12 and 13: cup (P612), kalathos or “basket” cup (P615), stamnoid jar (P622), pithos (P629), footed tray(?) (P633), slab-shaped object (P635), beak-spouted jug with scoop (P637), closed vessel (P639).
- Plate 56. Pottery from Deposit 13 and pottery without established provenance: closed vessel (P640), pithoi (P641, P642), beak-spouted jug (P643), closed vessel (P644), tripod cooking pots (P645, P646), pithos lid (P647).
- Plate 57. Pottery without established provenance: conical kados or pithos (P650), open-spouted bowl (P651), miniature teapot (P653), bridge-spouted jars (P655, P663), skyphos (P679), Vapheio cup (P710), S-profile cup (P733), stand or fruitstand (P747), pithos (P768).
- Plate 58. Stone finds from the Vigla Building: grinder-pounder (S1), polisher (S2), grinder (S3), grinder-crushers/pounders (S4–S6, S9), polisher-burnisher (S7), “pestle” (S8), weight (S10), burnisher/whetstone (S11), door socket or mortar (S12).
- Plate 59. Stone finds from the Vigla Building: working surface (S13), saddle quern (S14).

- Plate 60. Stone and shell finds from the Vigla Building: stone polisher (**S15**), grinder-crusher (**S16**), polisher(?) (**S17**), stalagmite (**S18**), pecking tool (**S19**), pumice (**S21**), vase (**SV28**), bowl (**SV29**); shell (**Sh3**).
- Plate 61. Stone table or base (**SV30**) from the Vigla Building.
- Plate 62. Multiple views and impressions of each seal in the Giamalakis Collection attributed to Apesokari (**SS1–SS4**).



Acknowledgments

I would like to thank warmly Gerlinde Schörgendorfer[†] for her permission to study the relevant photographic and archival material that belonged to the excavator, August Schörgendorfer, without which many aspects of interpretation would be impossible.

Funding from the Institute for Aegean Prehistory (INSTAP) and the Mediterranean Archaeological Trust (2010) supported this project, and they are gratefully acknowledged.

Many thanks also are due to Stavros Amanakis, chief guard of the Herakleion Ephorate of Antiquities, and Vasso Marsellou, former curator of the Herakleion Archaeological Museum, for their help in tracing most of the finds from Tholos Tomb A and all the material from the Vigla Building. Several people kindly enabled the study of the material from 2010 through 2014, and I owe my warmest thanks to them: the former directors of the Herakleion museum, Athanasia Kanta and George Rethemiotakis; the former Knossos curators, Doniert Evely and Matthew Haysom; as well as the chief guards of the Herakleion museum, Antonis Kafousis and Dimitris Apostolakis.

Research for this book started during my Stanley J. Seeger Visiting Research Fellowship in Hellenic Studies at Princeton University in 2011. A fellowship and several visits to the Center for Hellenic Studies at Harvard University in 2014 facilitated writing the manuscript; many thanks therefore are given to its director, Gregory Nagy, the staff, and particularly the librarians Lanah Koelle and Temple Wright.

The restoration and study of the material presented in this book are the result of collaborative work by many specialists, to all of whom my warmest acknowledgments are given. Conservators Irene Krasagaki, Eleutheria Giatromanolaki, Yiannis Rogdakis, and Efi Tsitsa worked on the restoration of the clay finds; Katharine Hall, conservator at the

INSTAP Study Center for East Crete (SCEC), masterfully restored the large pithoi from the Vigla Building. Archaeologists Andreas Lyrintzis, Ourania Sepsa, and Michella Zambanini assisted with the preliminary sorting of the ceramic material. Colleagues Alexia Spiliotopoulou, Kaiti Archontaki, Ilaria Caloi, Eleni Gerontakou, Luca Girella, Flora Michelaki, Carl Knappett, Mimika Kriga, Kostis Christakis, and Ioanna Venieri generously provided valuable suggestions. Simona Todaro contributed her expertise on Prepalatial Mesara pottery through a tour of the excavation storeroom at Phaistos in 2013. Tristan Carter contributed his expertise on lithics.

The following specialists collaborated with the author: Sevi Triantaphyllou and Niki Papakonstantinou studied the osteological material from Tholos A and undertook stable isotope analysis, while Anna Juras, Maciej Chyleński, and Argyro Nafplioti undertook the aDNA study. Doniert Evely studied the stone finds and shells from the Vigla Building; Sylviane Déderix contributed a geographic information system (GIS)-based visibility analysis of the Apesokari landscape as a postdoctoral fellow of the National Fund for Scientific Research (F.R.S-FNRS) at the Catholic University of Louvain (Institute for the Study of Civilisations, Arts, and Letters/Center for the Study of Ancient Worlds/Aegean Interdisciplinary Studies Research Group [INCAL/CEMA/AEGIS]); and Apostolos Sarris and the Laboratory of Geophysical-Satellite Remote Sensing and Archaeoenvironment at the Foundation for Research and Technology, Hellas (FORTH) kindly provided the digital elevation models. Finally, Olga Krzyszkowska and Basilios Tsikouras contributed Appendices A (seals) and B (Raman spectroscopic analysis of the stone finds), respectively. Thomas Ganetsos and Thomas Katsaros are warmly thanked for acquiring the Raman spectra of the stone finds from the Vigla Building. Michael Nelson collaborated with Georgia Flouda on the architectural study of Tholos A, and Petros Charamis provided invaluable scientific expertise and interpretation by creating photogrammetric models of Tholos A and the Vigla Building as well as the three drawings of the building. Special thanks also go to Miriam Clinton for re-exporting these drawings from AutoCAD. I am also grateful to John McEnroe for reading the chapter on the architecture of the Vigla Building and offering feedback.

Many warm thanks go to Thomas Brogan, director of INSTAP SCEC, and also to Chronis Papanikolopoulos, chief photographer at INSTAP SCEC, who photographed the finds from Tholos Tomb A; I am responsible for the rest of the photos unless otherwise credited. Kleanthis Sidiropoulos offered invaluable guidance with Photoshop and graphic design.

Most of the finds were drawn with exquisite care by Giuliano Merlatti[†], to whom a great debt is owed, except for a few by Doniert Evely, Pepi Stefanaki, and Vasilios Tsikouras. Pepi Stefanaki, Doniert Evely, and I digitally processed all drawings of finds. Doniert Evely, Olga Krzyszkowska, Giuliano Merlatti[†], and I compiled the figures and plates of the finds. Credits for individual photos and figures with topographic maps and architectural drawings are given in the captions. Finally, I would like to express my warmest thanks to Philip Betancourt, who supported the publication of this volume by INSTAP Academic Press; to Susan Ferrence (Director of Publications, INSTAP Academic Press) for her feedback and support throughout the publication process; to the copyeditors Madeleine Donachie and Sarah Peterson, who kindly gave the manuscript the benefit of their careful reading; and to the two anonymous peer reviewers who made valuable suggestions.

Many friends and my brother, Charalampos Floudas, provided encouragement, especially during the late stages of the project; to all of them I owe a great debt of thanks. Last, but not least, this book is dedicated to my parents, Stavros and Eugenia, with gratitude for their love and unfailing support throughout the years.



List of Abbreviations

A	adenine	F	figurine
AEGIS	Aegean Interdisciplinary Studies Research Group	FM	Furumark Motif
aDNA	ancient DNA	FN	Final Neolithic
app.	appendix	FORTH	Foundation for Research and Technology, Hellas
avg.	average	F.R.S.-FNRS	Fund for Scientific Research-Fonds de la Recherche Scientifique
BRI	bone representation index	g	gram(s)
C	cytosine	G	guanine
ca.	circa	GIS	geographic information system
CEMA	Center for the Study of Ancient Worlds	ha	hectare(s)
cm	centimeter(s)	h.	height
cm ⁻¹	reciprocal centimeter	HM	Herakleion Archaeological Museum accession number
CMS	<i>Corpus der Minoischen und Mykenischen Siegel</i> (Berlin 1964–2000; Mainz 2002–present)	HNM	Archaeological Museum of Hagios Nikolaos accession number
C:N	carbon-to-nitrogen ratio	INCAL	Institute for the Study of Civilisations, Arts, and Letters
dia.	diameter	INSTAP	Institute for Aegean Prehistory
DEM	digital elevation model	INSTAP SCEC	Institute for Aegean Prehistory Study Center for East Crete
dim.	dimension	int.	interior
DOL	Dark-on-Light	inv. no.	inventory number
EM	Early Minoan		
est.	estimated		

kg	kilogram(s)	n/a	not applicable
km	kilometer(s)	no(s).	number(s)
L.	length	nm	nanometer
LM	Late Minoan	P	pottery
LOD	Light-on-Dark	PL-Grid	Polish Grid
m	meter(s)	pres.	preserved
m ²	square meter(s)	rCRS	revised Cambridge Reference Sequence
M1	first molar		
M2	second molar	RKE	rotative kinetic energy
mm	millimeter(s)	S	stone tool
m asl	meters above sea level	SciLifeLab	Science for Life Laboratory
max.	maximum	Sh	shell
min.	minimum	SNIC	Swedish National Infrastructure for Computing
mL	milliliter(s)		
mm	millimeter(s)	SS	seal or “white piece”
MM	Middle Minoan	SI	stone idol
MNE	minimum number of elements	SV	stone vase
MNI	minimum number of individuals	T	thymine
MNV	minimum number of vessels	th.	thickness
MSM	musculoskeletal stress markers	UPPMAX	Uppsala Multidisciplinary Center for Advanced Computational Science
MSV	stone vessel type from <i>Minoan Stone Vessels</i> (Warren 1969)		
mtDNA	mitochondrial DNA	VPDB	Vienna Pee Dee Belemnite
mW	megawatt(s)	w.	width
NA	not analyzed	wt.	weight